



## ALUMINUM COMPOSITE MATERIAL

### 1. How high on a structure can Alumitex® be installed?

The FR core material meets the NFPA285 (evaluation of fire propagation) test standard which allows the material to be used at unlimited heights in the U.S.A.

### 2. How true does an existing building facade have to be to use Alumitex in a retrofit?

Depending on the conditions in a retrofit, adjustable girts allow Alumitex to be maneuvered to bring the wall out to plumb.

### 3. What is the minimum cavity spacing between exterior wall and panel system?

A minimum of 1" (25mm) spacing behind the panel system is required to allow for furring channels or adjustable sub-girts. If there's insulation within the wall assembly, adjust the cavity depth accordingly.

### 4. What is the minimum and maximum joint width between panels?

Standard joint spacing is 1/2" (13mm) however custom widths are possible.

### 5. Can brackets for the sub-girt system be installed with wood stud framing?

Yes. Review by an engineer for exact anchoring depths would be required.

### 6. If the sub-girt system is installed with wood studs, are there any expansion or contraction implications that could lead to performance issues?

The system allows for some movement through the joints. There are no performance issues when installed using wood studs. All subframing should be approved by a local licensed professional engineer.

# Frequently Asked Questions

### 7. When are stiffeners required? How far are they spaced?

Typically, stiffeners are required when the smaller dimension of the panel exceeds 39" (990mm) and are generally spaced 24" (600mm) center to center. Final requirements vary based on local building codes and engineer specifications.

### 8. What is the largest allowable attachment clip spacing?

Typical spacing for system clips is 16" - 24" (400-600mm) center to center. This may however vary based on panel size. Contact your representative for more information.

### 9. Is there a wind load/wind zone matrix for Alumitex?

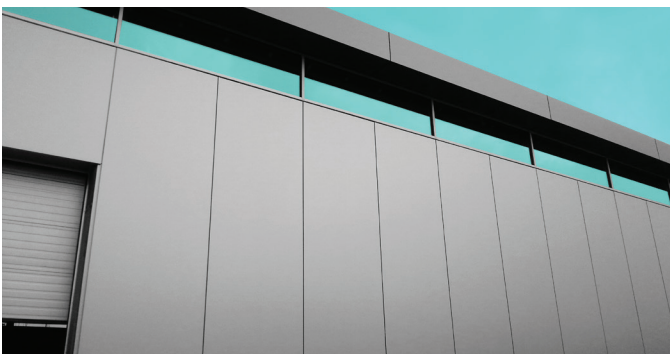
Each project is unique. Most state and provincial building codes have wind load matrices used to calculate stiffener requirements. Panel load table is available upon request.

### 10. What is the best practice for sealing the holes in the weather barrier created by affixing the L-bracket?

Use of self-sealing weather barrier is recommended. Always follow the manufacturers' recommendations for proper use.

### 11. Are there special installation instructions for curtain walls or deflection points?

There are no special installation instructions when there is an adjacent curtain wall. The panel system is designed to be independent of the curtain wall. Installation at deflection points varies depending on the project. For information specific to your project, talk to your Elemex representative.



Architectural Facade Systems

530 Admiral Drive,

London, Ontario, Canada N5V 0B2

Toll free: 1-844-435-3639

info@elemex.com

www.elemex.com



# Frequently Asked Questions

## 12. Do all Alumitex colors work as an exterior application?

All colors are available for interior or exterior use. Contact your representative for standard colors and sizes.

## 13. Are custom colors available?

Custom colors and finishes are available with minimum quantities.

## 14. How is the ACM material manufactured?

Aluminum Composite Material is comprised of two sheets of aluminum sandwiching a solid core of extruded thermoplastic material formed in a continuous process using no glues or adhesives between dissimilar materials. The core is free of voids and/or air spaces and does not contain foamed insulation materials. The bond between the core and skins is a chemical bond.

## 15. What type of paint is used on the material?

ACM is coil coated in a continuous process with a polyvinylidene fluoride (PVdF) coating containing a minimum of 70% KYNAR 500®/HYLAR 5000® resins which meets or exceeds AAMA 2605 and AAMA 620 performance requirements.

## 16. Is Alumitex environmentally-sensitive?

The material is 100% recyclable. The extrusions are made of aluminum alloy. The aluminum alloy is weather- and UV-resistant and non-corrosive giving it a very long lifespan. In addition, the material is recyclable. Alumitex meets a number of LEED credits.

## 17. What are the standard thicknesses?

ACM is manufactured in three standard thicknesses; 3mm (1/8"), 4mm (5/32") and 6mm (1/4"). Standard sheet widths are 1020mm (40"), 1250mm (49") and 1575mm (62"). There is no limitation on the length but within a length of 6000mm (19'6") is recommended for convenient shipping and handling purposes.

## 18. What is the product lead time?

Inventory finishes require four to six weeks to fabricate and ship provided there are accurate site dimensions. For the complete time frame, ask your representative for our order process document.



Architectural Facade Systems

530 Admiral Drive,

London, Ontario, Canada N5V 0B2

Toll free: 1-844-435-3639

info@elemex.com

www.elemex.com

ELXD-004/03-19